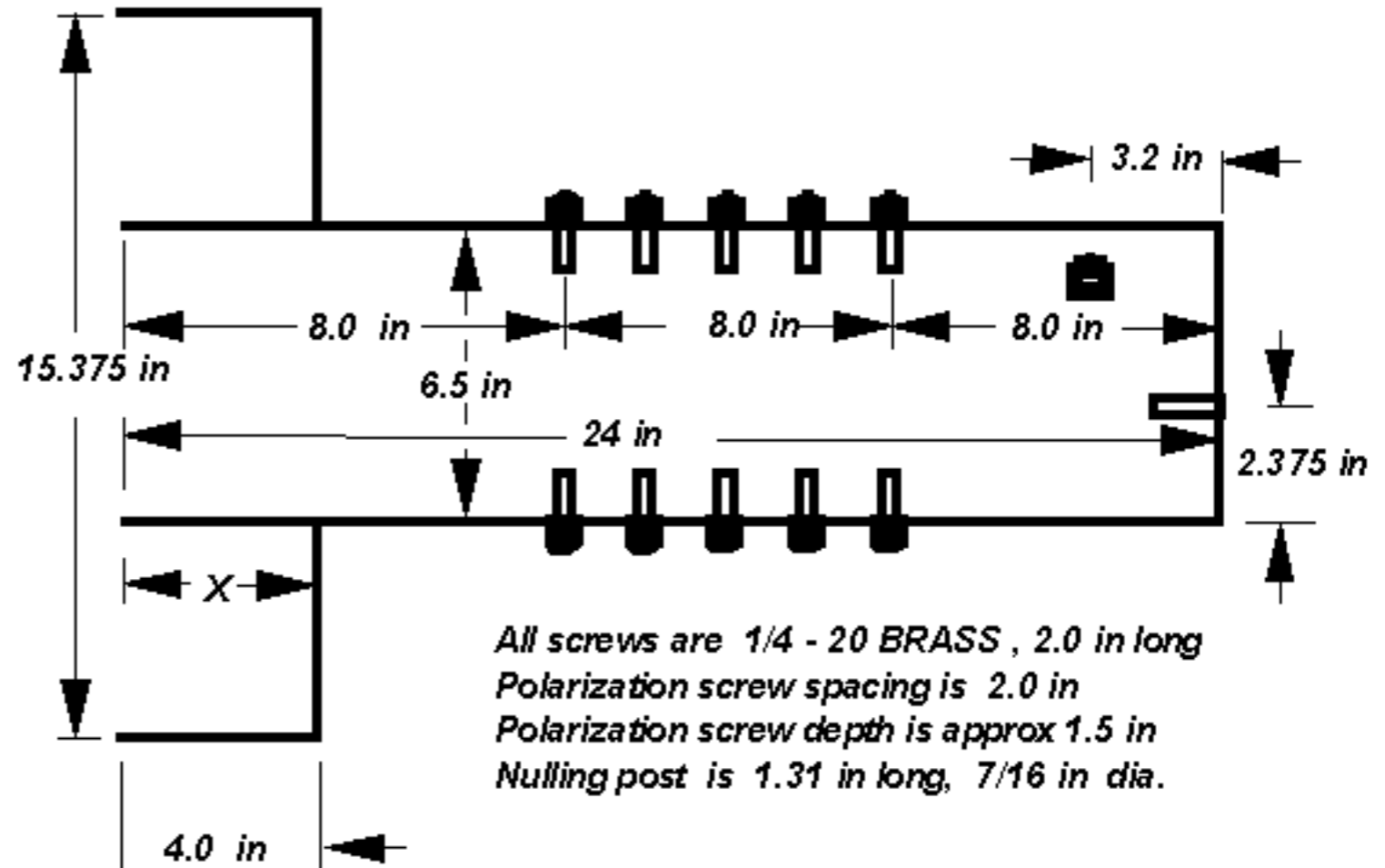
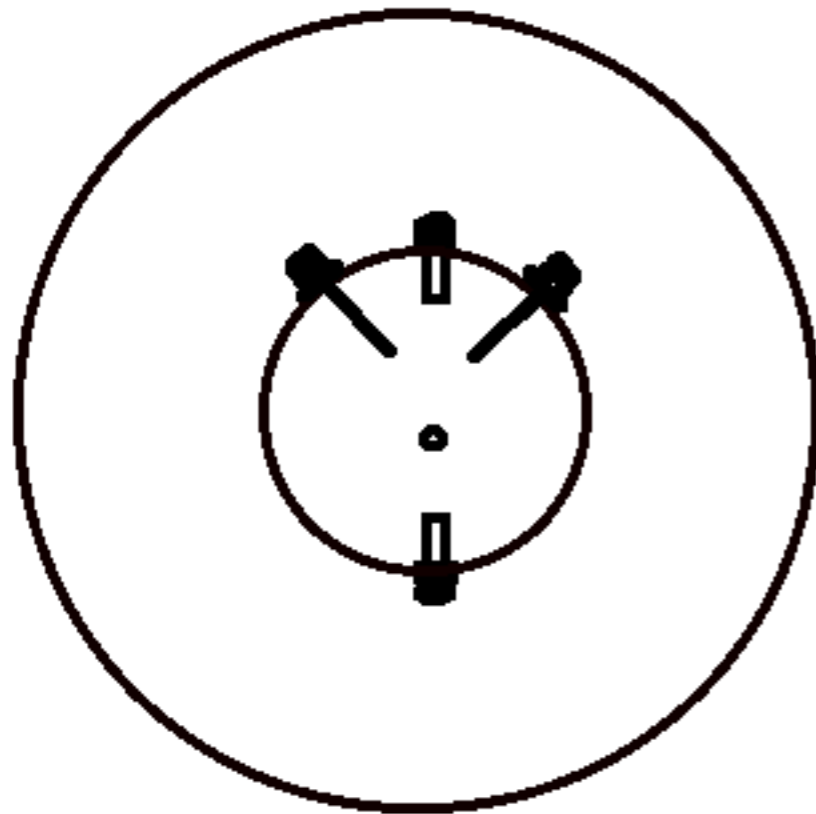
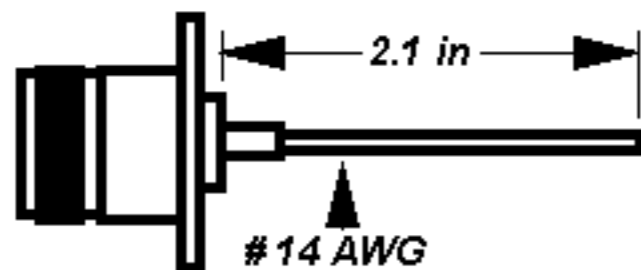


VE4MA 1296 MHz CIRCULAR POLARIZATION FEEDHORN



All screws are 1/4 - 20 BRASS , 2.0 in long
 Polarization screw spacing is 2.0 in
 Polarization screw depth is approx 1.5 in
 Nulling post is 1.31 in long, 7/16 in dia.

Distance X can be varied for different f/D ratios
 X is 4.0 in for f/ D of 0.4
 Polarizer screws should be optimized after X is set
 Drawing Not To Scale



UG 58A/U

VE4MA 96 02 27

Please Note that These Scalar Ring Dimensions are **ONLY** for a 6.5 in Dia. (W2IMU) Main Feed